

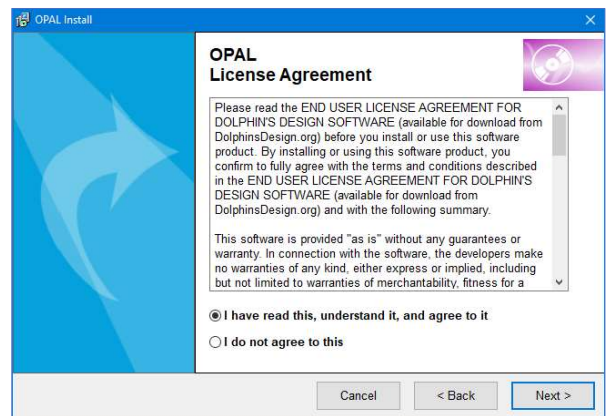
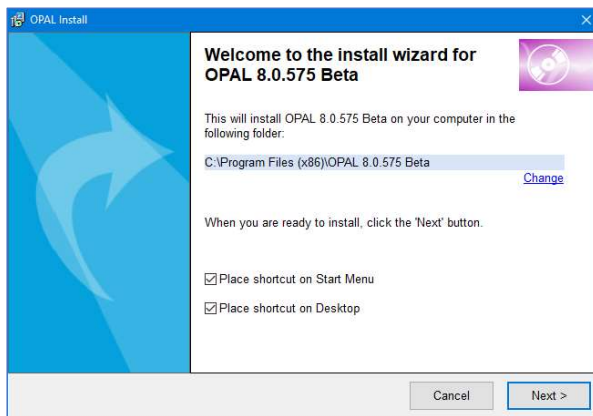


- i** Please use a Windows **Administrator user code** to install OPAL. Detailed information for the administration and installation of OPAL is provided in the file [Readme.pdf](#) (see your OPAL installation folder).

1. OPAL-Installation

Start the file you had downloaded from DolphinsDesign.org (e.g. OPAL80575_Beta_Setup_E.exe) with a double-click. If Windows SmartScreen prevents running the downloaded file, because Windows SmartScreen doesn't know the application and the publisher, depending on your version of Windows (e.g. Windows 10) you need to click on "More Info" and then on "Run anyway".

- Confirm the destination folder (e.g. **C:\Program Files (x86)\OPAL 8.0.575 Beta**) and click the button **[Next >]**.
- Confirm the license agreement and click the button **[Next >]**. Then confirm with button **[OK]** to start OPAL



2. OPAL Database and Security Files

If OPAL was not started automatically by the OPAL installation program (as above), please start OPAL with the desktop ikon OPAL (e.g. "OPAL 8.0.575 Beta") or from the Windows menu 'Start / Programs / OPAL' (resp. from the Apps under letter 'O' in Windows 10 / Windows 11).

- The **OPAL Installation Wizard** appears. Choose the language for the user interface with a click.
- Select the option **New Installation**. Click the button **[Next >]** and choose the installation folders for the OPAL database and OPAL security files. For Client-Server installations directly choose the folders on your server computer (see Help for details).

